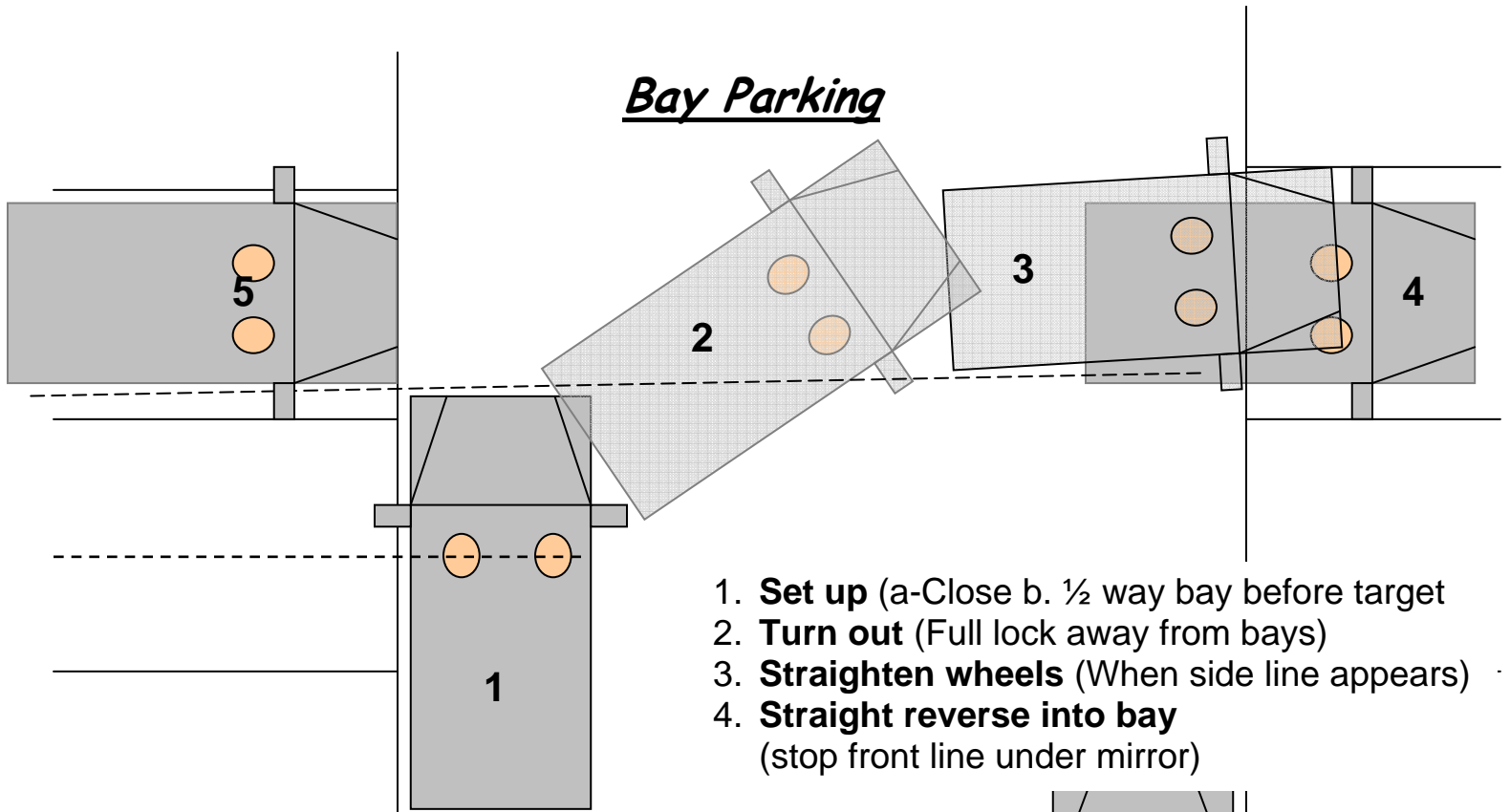
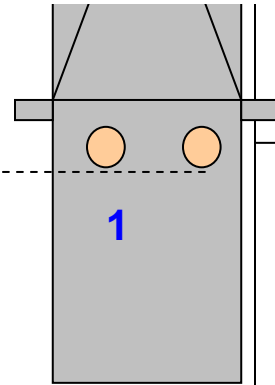


## Bay Parking



1. **Set up** (a-Close b. ½ way bay before target)
2. **Turn out** (Full lock away from bays)
3. **Straighten wheels** (When side line appears)
4. **Straight reverse into bay**  
(stop front line under mirror)



1. **Set up** (a-far b. side line 3 bays in front)
2. **Turn in** (Full lock toward bays)
3. **Straighten wheels** (When side line appears)
4. **Straight reverse into bay**  
(stop front line under mirror)

